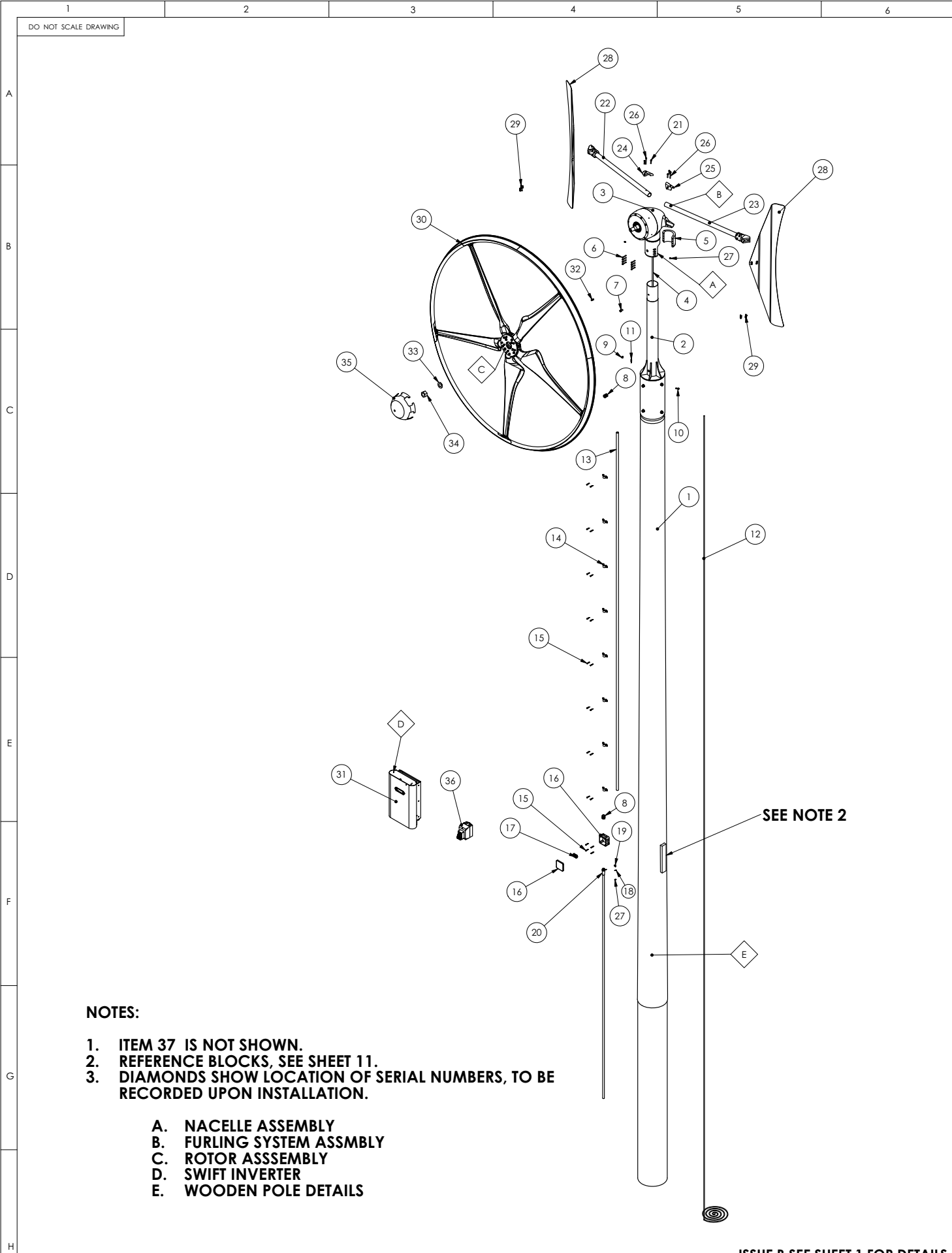


1

A3

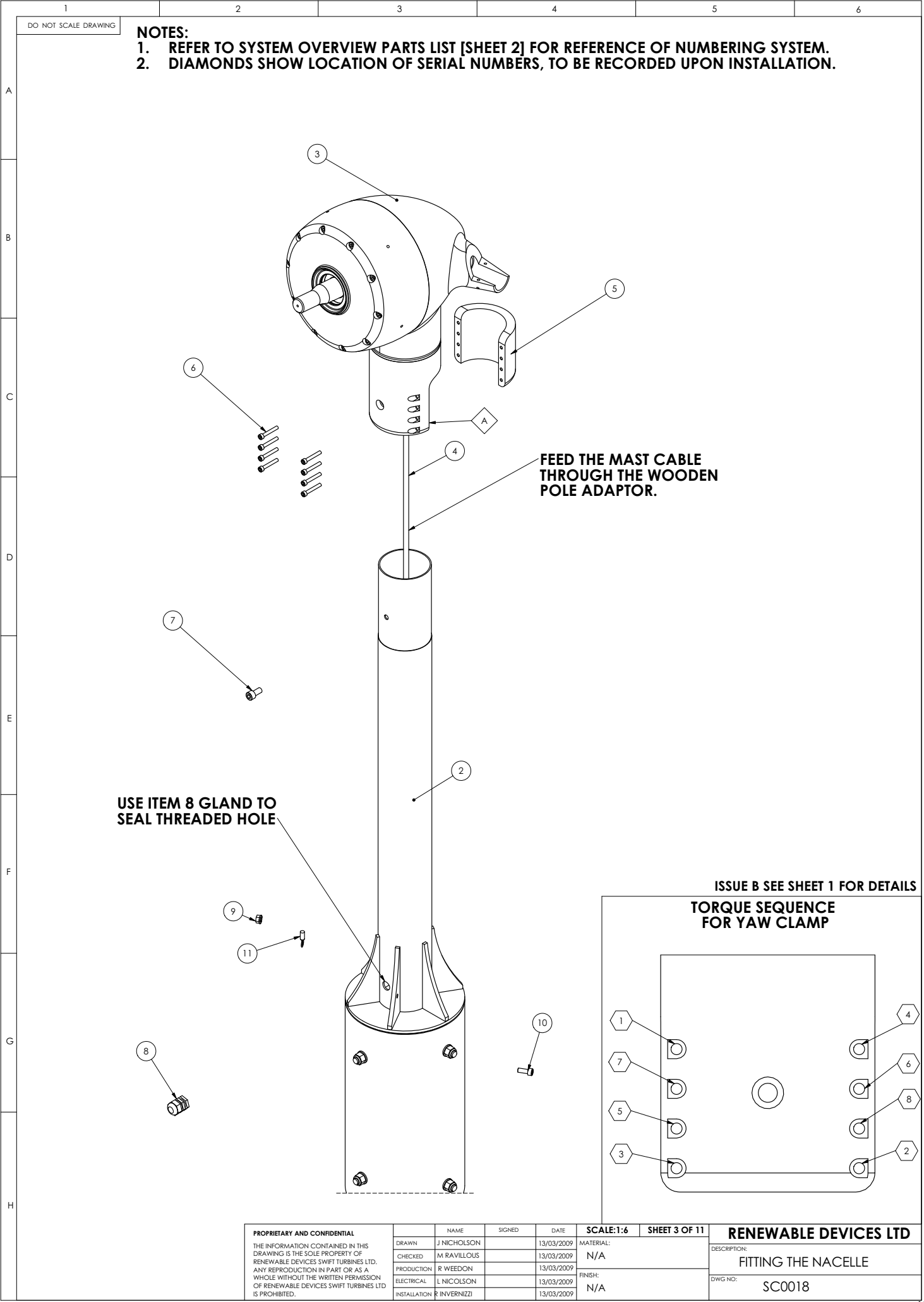


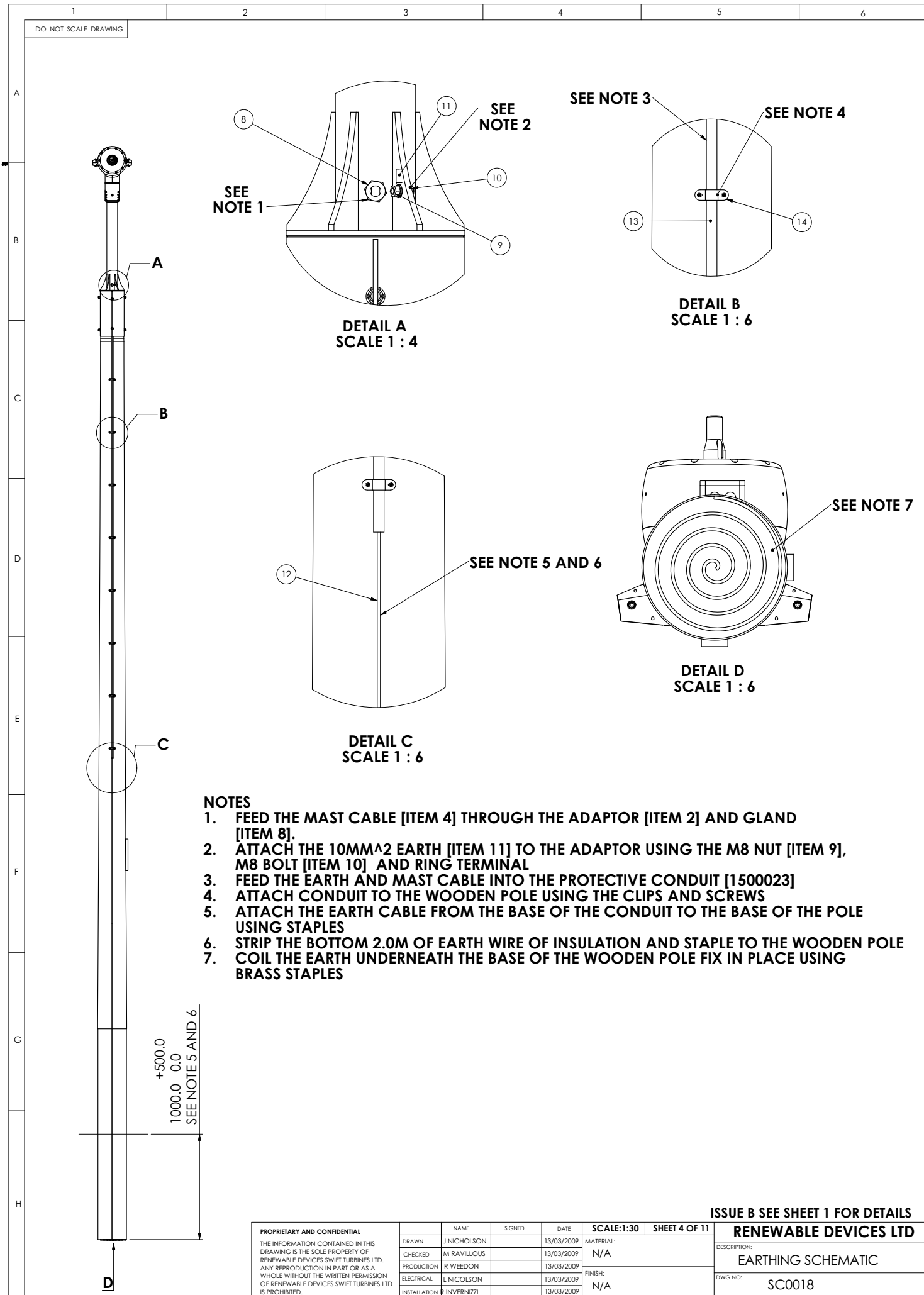
- NOTES:**
- 1. ITEM 37 IS NOT SHOWN.
 - 2. REFERENCE BLOCKS, SEE SHEET 11.
 - 3. DIAMONDS SHOW LOCATION OF SERIAL NUMBERS, TO BE RECORDED UPON INSTALLATION.

- A. NACELLE ASSEMBLY
- B. FURLING SYSTEM ASSMBLY
- C. ROTOR ASSEMBLY
- D. SWIFT INVERTER
- E. WOODEN POLE DETAILS

ISSUE B SEE SHEET 1 FOR DETAILS

PROPRIETARY AND CONFIDENTIAL		NAME	SIGNED	DATE	SCALE:1:30	SHEET 2 OF 11	RENEWABLE DEVICES LTD	
THE INFORMATION CONTAINED IN THIS DRAWING IS THE SOLE PROPERTY OF RENEWABLE DEVICES SWIFT TURBINES LTD. ANY REPRODUCTION IN PART OR AS A WHOLE WITHOUT THE WRITTEN PERMISSION OF RENEWABLE DEVICES SWIFT TURBINES LTD IS PROHIBITED.		DRAWN	J NICHOLSON	13/03/2009	MATERIAL: N/A		DESCRIPTION:	
		CHECKED	M RAVILLOUS	13/03/2009			SYSTEM OVERVIEW	
		PRODUCTION	R WEEDON	13/03/2009	FINISH: N/A		DWG NO:	
		ELECTRICAL	L NICOLSON	13/03/2009			SC0018	
				INSTALLATION	R INVERNIZZI	13/03/2009		





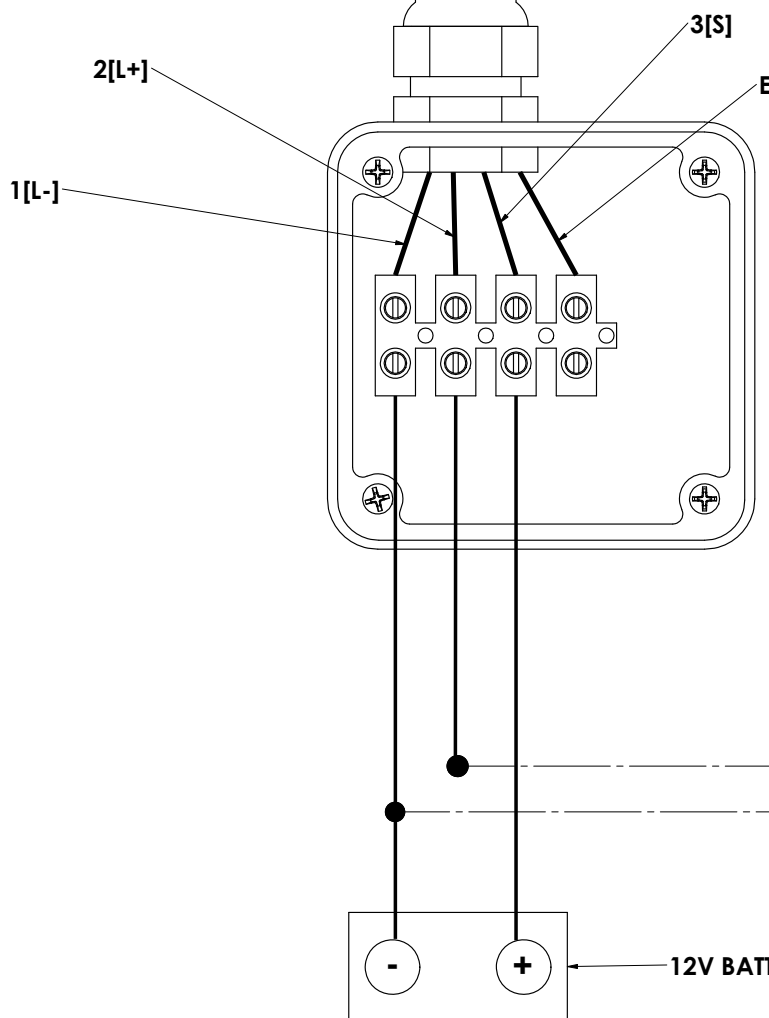
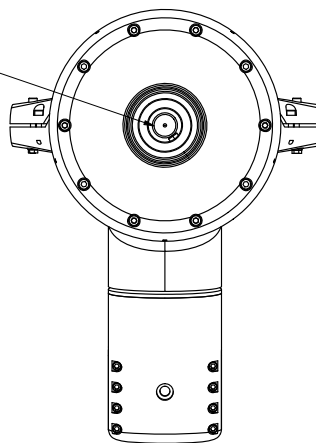
ISSUE B SEE SHEET 1 FOR DETAILS

PROPRIETARY AND CONFIDENTIAL				NAME	SIGNED	DATE	SCALE: 1:30	SHEET 4 OF 11	RENEWABLE DEVICES LTD
THE INFORMATION CONTAINED IN THIS DRAWING IS THE SOLE PROPERTY OF RENEWABLE DEVICES SWIFT TURBINES LTD. ANY REPRODUCTION IN PART OR AS A WHOLE WITHOUT THE WRITTEN PERMISSION OF RENEWABLE DEVICES SWIFT TURBINES LTD IS PROHIBITED.				DRAWN	J NICHOLSON	13/03/2009	MATERIAL: N/A		DESCRIPTION: EARTHING SCHEMATIC
				CHECKED	M RAVILLOUS	13/03/2009			
				PRODUCTION	R WEEDON	13/03/2009			
				ELECTRICAL	L NICHOLSON	13/03/2009	FINISH: N/A		DWG NO: SC0018
				INSTALLATION	R INVERNIZZI	13/03/2009			

DO NOT SCALE DRAWING

TEST E1: BRAKE RELEASE AND DC VOLTAGE

CLOCKWISE
ROTATION OF SHAFT



MULTIMETER

12V BATTERY OR POWER SUPPLY

PROPRIETARY AND CONFIDENTIAL

THE INFORMATION CONTAINED IN THIS DRAWING IS THE SOLE PROPERTY OF RENEWABLE DEVICES SWIFT TURBINES LTD. ANY REPRODUCTION IN PART OR AS A WHOLE WITHOUT THE WRITTEN PERMISSION OF RENEWABLE DEVICES SWIFT TURBINES LTD IS PROHIBITED.

	NAME	SIGNED	DATE
DRAWN	J NICHOLSON		13/03/2009
CHECKED	M RAVILLOUS		13/03/2009
PRODUCTION	R WEEDON		13/03/2009
ELECTRICAL	L NICOLSON		13/03/2009
INSTALLATION	R INVERNIZZI		13/03/2009

SCALE: 1:5

SHEET 5 OF 11

MATERIAL:

N/A

FINISH:

N/A

ISSUE B SEE SHEET 1 FOR DETAILS

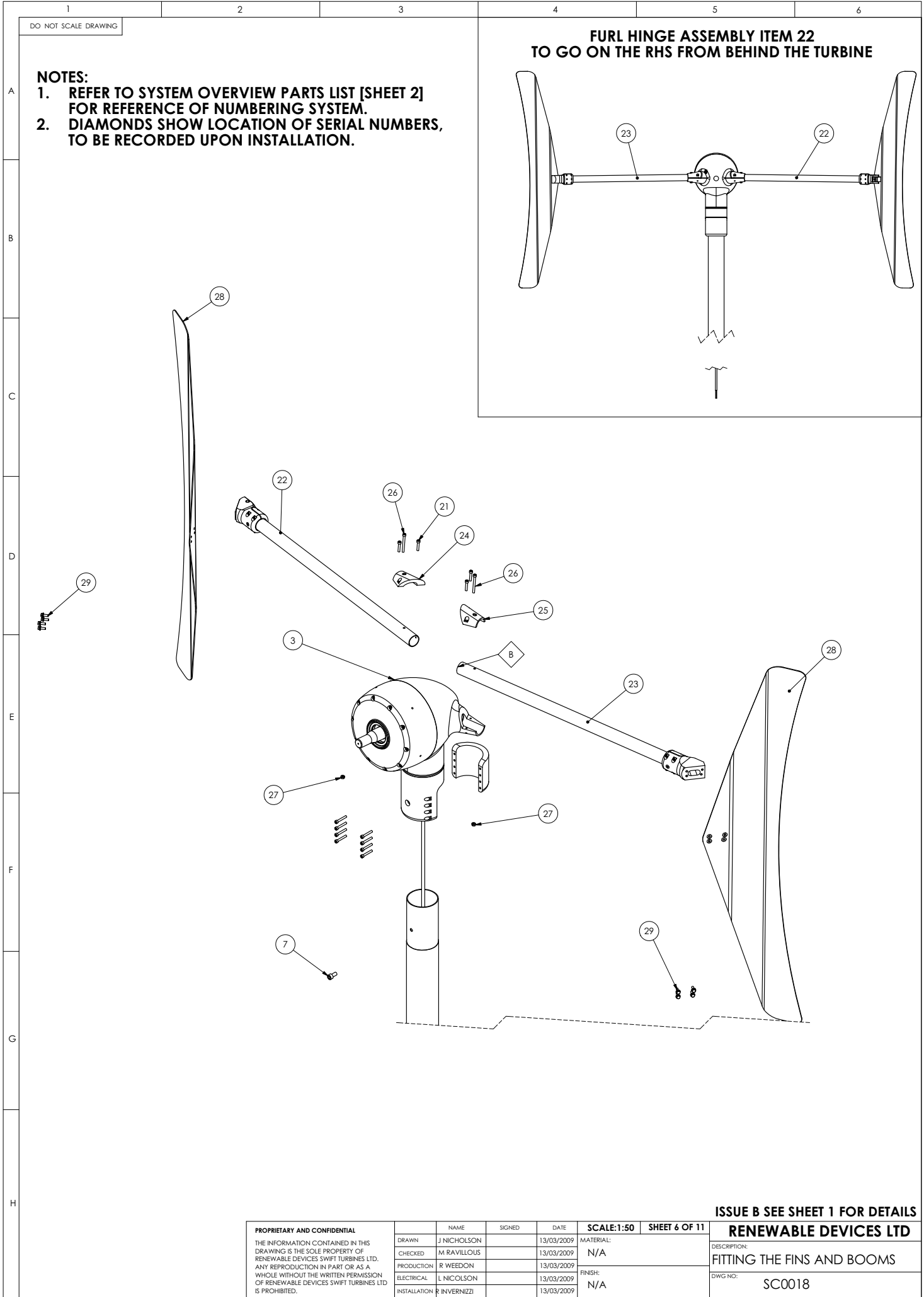
RENEWABLE DEVICES LTD

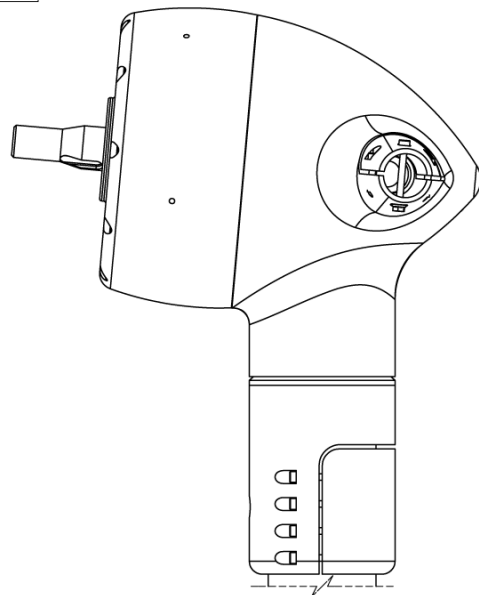
DESCRIPTION:

ELECTRICAL TEST: E1

DWG NO:

SC0018





NOTES

1. ITEM 37 : DUAL SUPPLY STICKERS TO BE ATTACHED ON SWIFT INVERTER AND DISTRUBUTION BOARD WITH DETAILS OF WHERE THE TURBINE CAN BE ISOLATED.
2. WIRING SIZING FOR THE DC SIDE [CONNECTOR BLOCK TO SWIFT INVERTER]
 - 0-100m = 2.5mmsq
 - 100-200m = 4.0mmsq
3. WIRE SIZING FOR 240V AC SIDE (INVERTER TO CONSUMER UNIT) MUST BE SIZED FOR NO GREATER THAN 4% VOLTAGE DROP AT 10A RMS.
4. ALL INTERNAL WIRING [MIN 2.5mmsq] TO BE CONTAINED WITHIN CONDUIT OR OF THE SWA TYPE
5. EARTH WIRE - 4.0mmsq
6. REFER TO SYSTEM OVERVIEW PARTS LIST [SHEET 2] FOR REFERENCE OF NUMBERING

SEE SHEET 8
FOR CONNECTION

MAST CABLE TO MOLEX CONNECTOR
AND EARTH CONNECTOR

SWA

SEE NOTE 4

SEE NOTE 3/4

SEE NOTE 3/4

DISTRUBUTION BOARD/
CONSUMER UNIT


SEE NOTE 5

SEE NOTE 5

SEE NOTE 5

MAST EARTH:10MM SQ EARTH
[YELLOW AND GREEN]
SEE NOTE 5

ISSUE B SEE SHEET 1 FOR DETAILS

UNLESS OTHERWISE SPECIFIED: DIMENSIONS ARE IN MILLIMETERS SURFACE FINISH: 6.4 Ra TOLERANCES: LINEAR: ± 0.25 ANGULAR: $\pm 0.5^\circ$ THREADS SPECIFIED TO BS 3643: 1981 WELD SYMBOLS SPECIFIED TO BS 499: 1991 UNITS AND FITS SPECIFIED TO BS 4500:1988				SCALE:1:18		SHEET 7 OF 11		<div>RENEWABLE DEVICES LTD</div> <div>DESCRIPTION: ELECTRICAL SCHEMATIC</div> <div>DWG NO. SC0018</div>	
<div>THIRD ANGLE PROJECTION</div> 				MATERIAL:		N/A			
				FINISH:		N/A			
						N/A			
	NAME	SIGNATURE	DATE						
DRAWN	J NICHOLSON		13/03/2009						
CHECKED									
PRODUCTION									

1

2

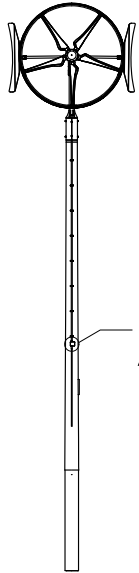
3

4

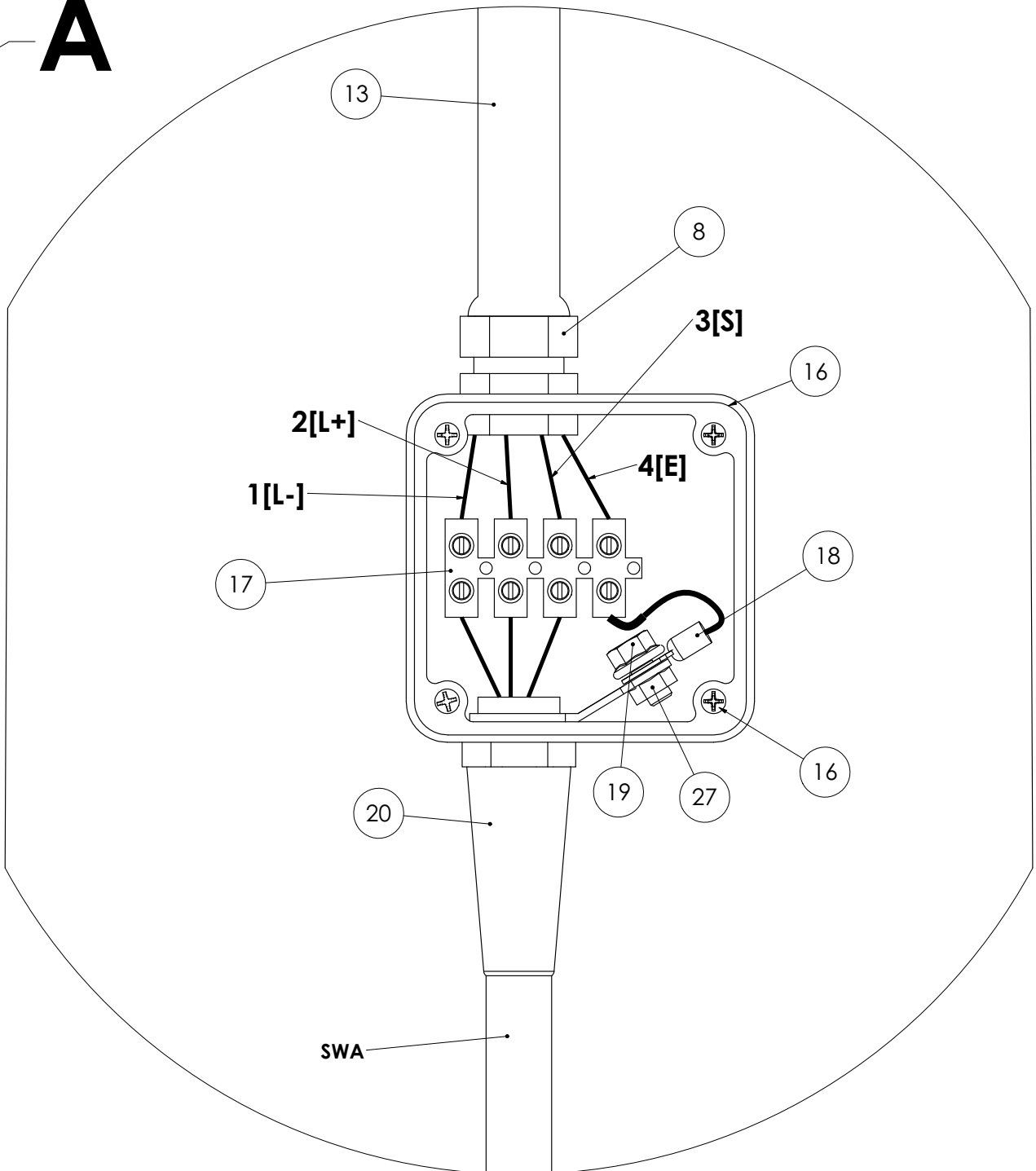
5

6

DO NOT SCALE DRAWING

**A**

DETAIL A **SCALE 1 : 1**

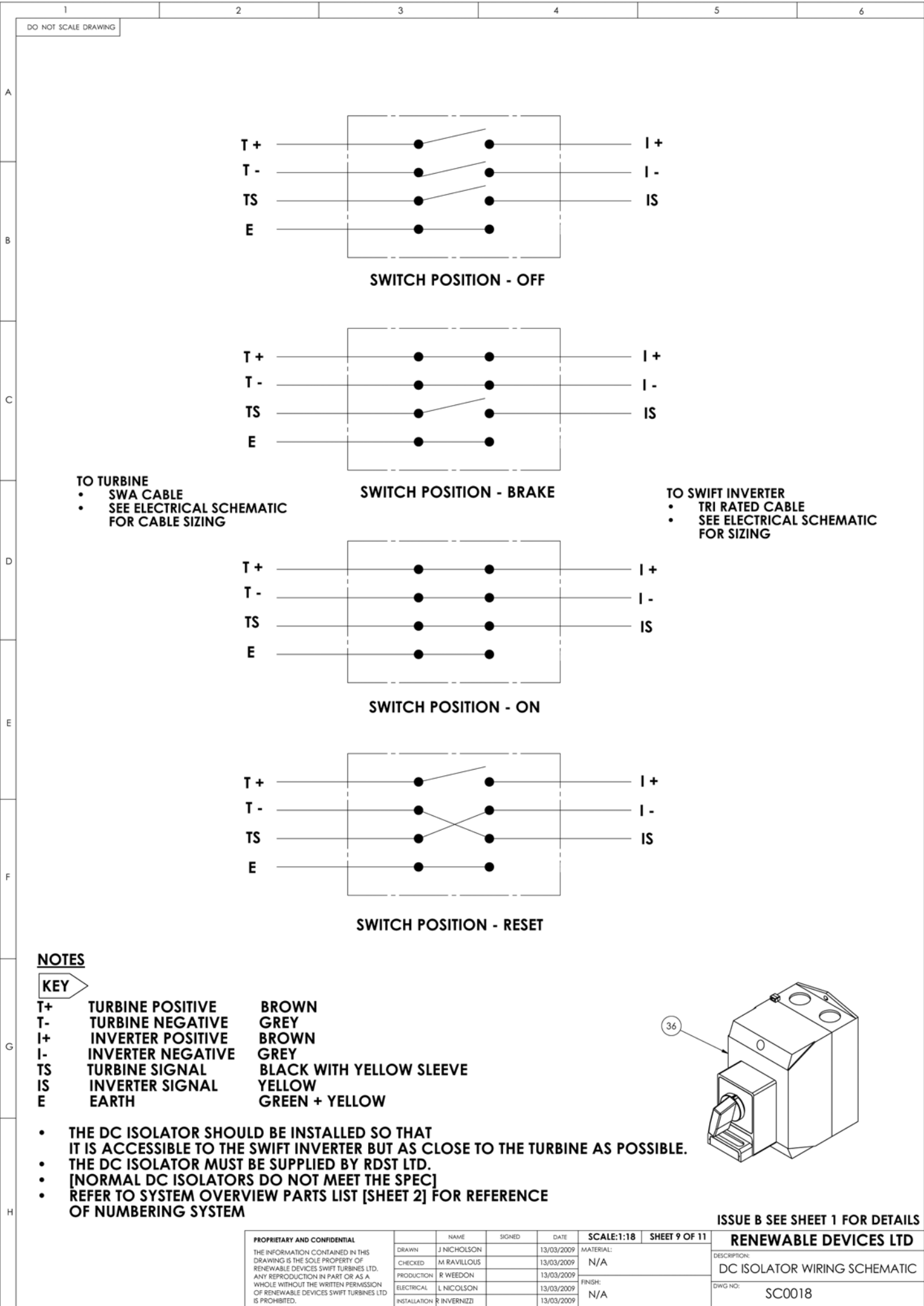


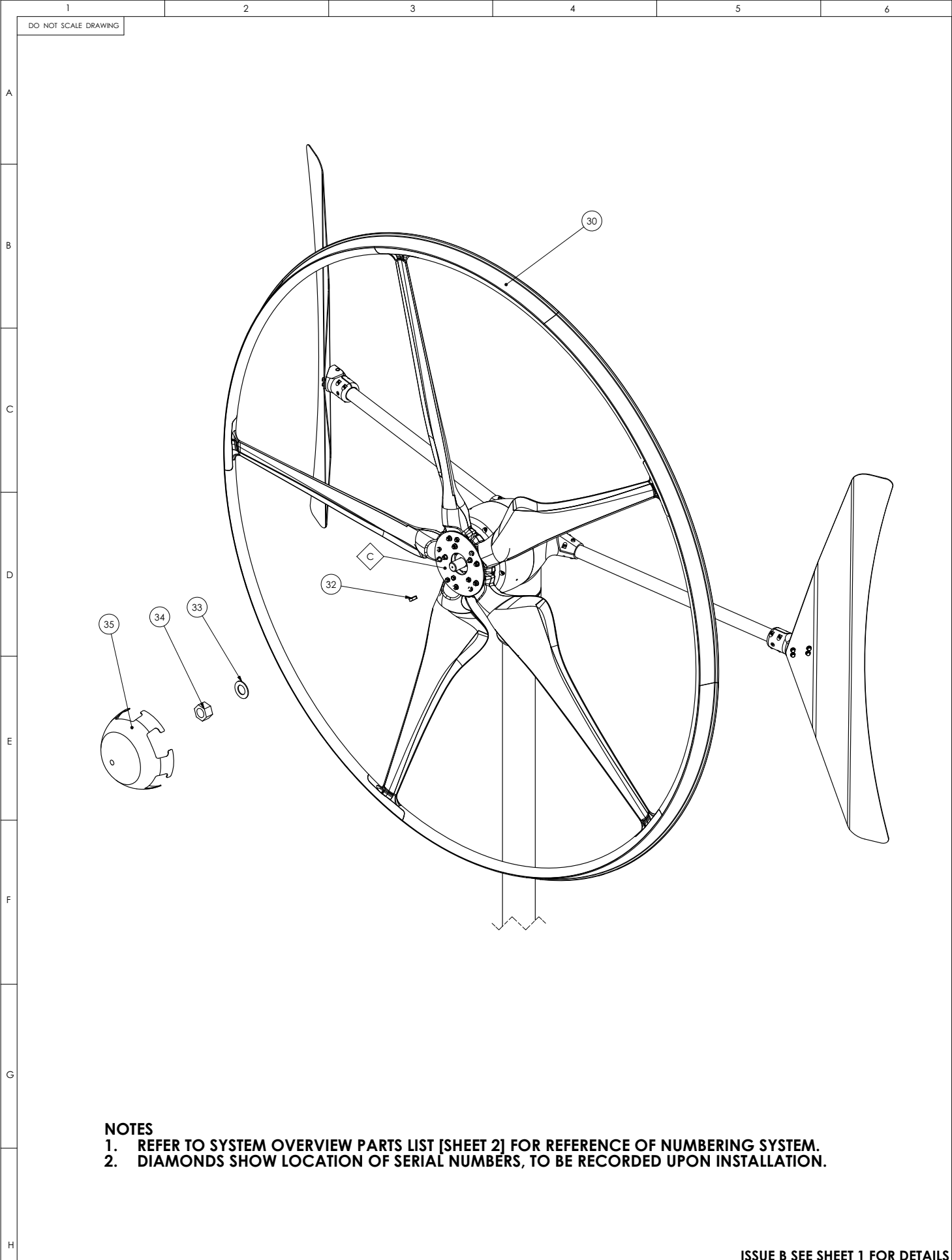
NOTES:

1. REFER TO SYSTEM OVERVIEW PARTS LIST [SHEET 2] FOR REFERENCE OF NUMBERING SYSTEM.

ISSUE B SEE SHEET 1 FOR DETAILS

PROPRIETARY AND CONFIDENTIAL		NAME	SIGNED	DATE	SCALE:1:100	SHEET 8 OF 11	RENEWABLE DEVICES LTD
THE INFORMATION CONTAINED IN THIS DRAWING IS THE SOLE PROPERTY OF RENEWABLE DEVICES SWIFT TURBINES LTD. ANY REPRODUCTION IN PART OR AS A WHOLE WITHOUT THE WRITTEN PERMISSION OF RENEWABLE DEVICES SWIFT TURBINES LTD IS PROHIBITED.		DRAWN	J NICHOLSON	13/03/2009	MATERIAL: N/A		DESCRIPTION: CONNECTOR BLOCK SCHEMATIC
		CHECKED	M RAVILLOUS	13/03/2009			
		PRODUCTION	R WEEDON	13/03/2009	FINISH: N/A		DWG NO: SC0018
		ELECTRICAL	L NICHOLSON	13/03/2009			
		INSTALLATION	R INVERNIZZI	13/03/2009			



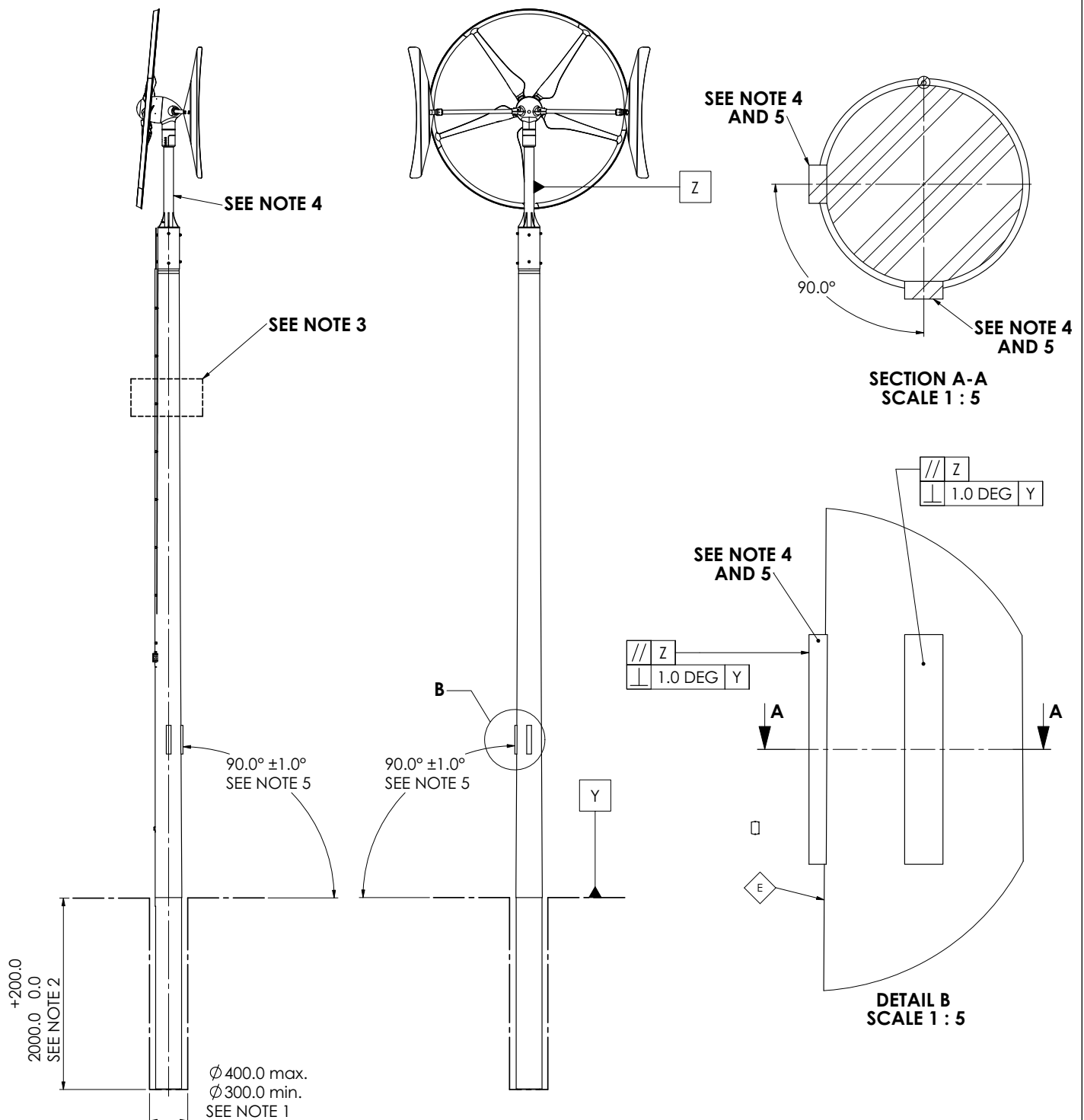


- NOTES**
- 1. REFER TO SYSTEM OVERVIEW PARTS LIST [SHEET 2] FOR REFERENCE OF NUMBERING SYSTEM.
 - 2. DIAMONDS SHOW LOCATION OF SERIAL NUMBERS, TO BE RECORDED UPON INSTALLATION.

PROPRIETARY AND CONFIDENTIAL				NAME	SIGNED	DATE	SCALE:1:100	SHEET 10 OF 11	ISSUE B SEE SHEET 1 FOR DETAILS
THE INFORMATION CONTAINED IN THIS DRAWING IS THE SOLE PROPERTY OF RENEWABLE DEVICES SWIFT TURBINES LTD. ANY REPRODUCTION IN PART OR AS A WHOLE WITHOUT THE WRITTEN PERMISSION OF RENEWABLE DEVICES SWIFT TURBINES LTD IS PROHIBITED.				DRAWN	J NICHOLSON	13/03/2009	MATERIAL: N/A		DESCRIPTION:
				CHECKED	M RAVILLOUS	13/03/2009			FITTING THE ROTOR
				PRODUCTION	R WEEDON	13/03/2009	FINISH: N/A		DWG NO:
				ELECTRICAL	L NICOLSON	13/03/2009			SC0018
				INSTALLATION	R INVERNIZZI	13/03/2009			

NOTES

1. HOLE/AUGER DIAMETER DEPENDS ON THE NOMINAL DIAMETER OF POLE TO BE INSTALLED.
2. DIMENSION SHOWS DEPTH OF HOLE WITH RELATION TO THE GROUND
3. TURBINE CAN BE LIFTED INTO POSITION USING THE CORRECT EQUIPMENT, WHEN LIFTING TAKE CARE NOT TO DAMAGE THE TURBINE WIRING AND CONDUIT.
4. CHECK THAT THE ADAPTOR AND BOTH REFERENCE BLOCKS ARE PARALLEL BEFORE LIFTING
5. TWO REFERENCE/LEVELLING BLOCKS ARE USED TO ACHIEVE THE CORRECT POLE/TURBINE ORIENTATION FROM GROUND LEVEL.
6. REFER TO SYSTEM OVERVIEW PARTS LIST [SHEET 2] FOR REFERENCE OF NUMBERING SYSTEM
7. DIAMONDS SHOW LOCATION OF SERIAL NUMBERS, TO BE RECORDED UPON INSTALLATION.



ISSUE B SEE SHEET 1 FOR DETAILS

PROPRIETARY AND CONFIDENTIAL

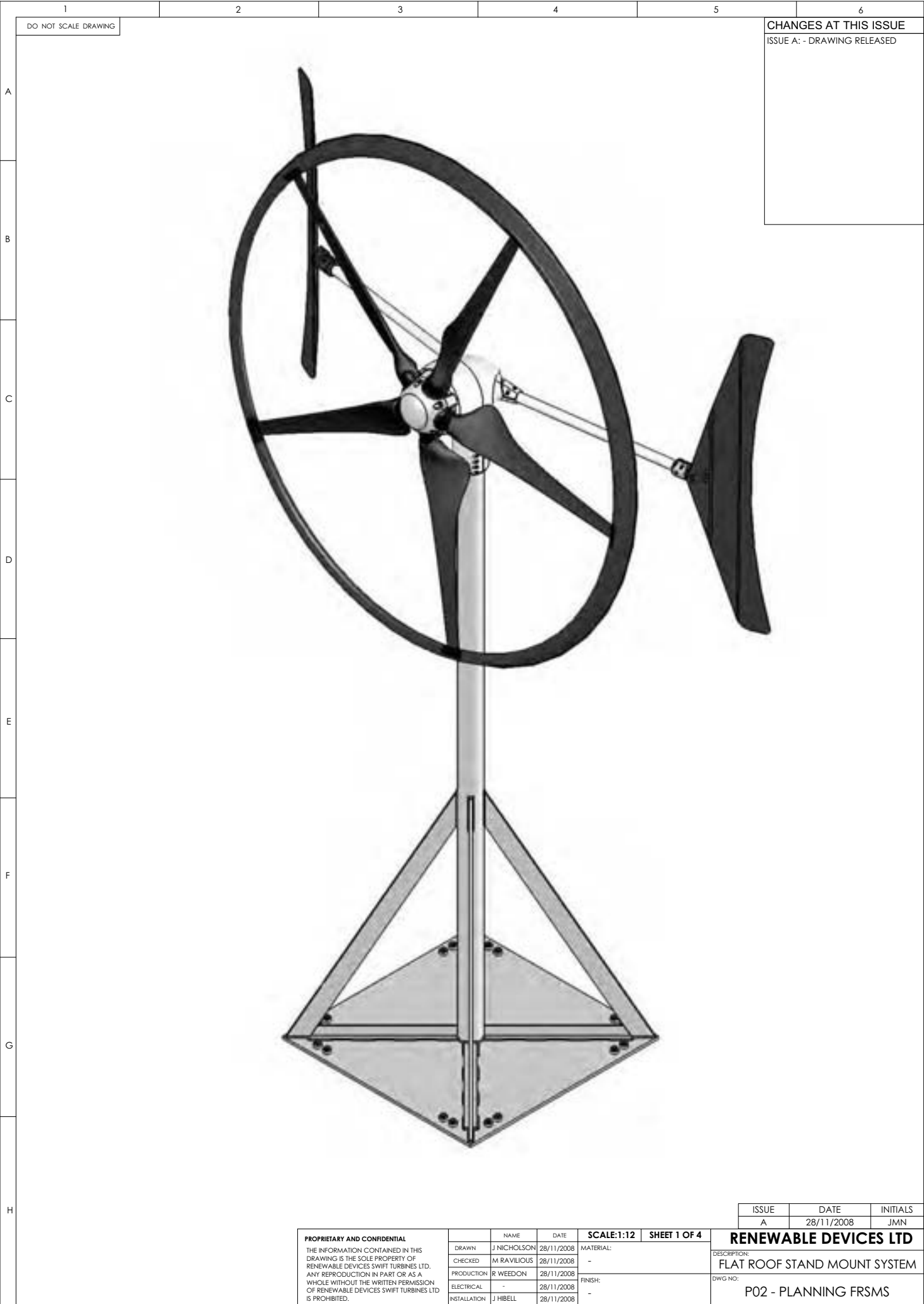
THE INFORMATION CONTAINED IN THIS DRAWING IS THE SOLE PROPERTY OF RENEWABLE DEVICES SWIFT TURBINES LTD. ANY REPRODUCTION IN PART OR AS A WHOLE WITHOUT THE WRITTEN PERMISSION OF RENEWABLE DEVICES SWIFT TURBINES LTD IS PROHIBITED.

	NAME	SIGNED	DATE	SCALE:1:40	SHEET 11 OF 11
DRAWN	J NICHOLSON		13/03/2009	MATERIAL:	
CHECKED	M RAVILLOUS		13/03/2009		N/A
PRODUCTION	R WEEDON		13/03/2009	FINISH:	
ELECTRICAL	L NICOLSON		13/03/2009		N/A
INSTALLATION	R INVERNIZZI		13/03/2009		

RENEWABLE DEVICES LTD

DESCRIPTION:
POLE PLANTING SCHEMATIC

DWG NO:
SC0018



DO NOT SCALE DRAWING

CHANGES AT THIS ISSUE
ISSUE A: - DRAWING RELEASED

ISSUE	DATE	INITIALS
A	28/11/2008	JMN

PROPRIETARY AND CONFIDENTIAL			SCALE:1:12	SHEET 1 OF 4
THE INFORMATION CONTAINED IN THIS DRAWING IS THE SOLE PROPERTY OF RENEWABLE DEVICES SWIFT TURBINES LTD. ANY REPRODUCTION IN PART OR AS A WHOLE WITHOUT THE WRITTEN PERMISSION OF RENEWABLE DEVICES SWIFT TURBINES LTD IS PROHIBITED.	DRAWN	J NICHOLSON	28/11/2008	MATERIAL: -
	CHECKED	M RAVILIOUS	28/11/2008	
	PRODUCTION	R WEEDON	28/11/2008	FINISH: -
	ELECTRICAL	-	28/11/2008	
	INSTALLATION	J HIBELL	28/11/2008	

RENEWABLE DEVICES LTD
DESCRIPTION:
FLAT ROOF STAND MOUNT SYSTEM
DWG NO:
P02 - PLANNING FRSMS

CHANGES AT THIS ISSUE
SEE SHT 1 FOR DETAILS

[illegible]

YAW DIAMETER
THE TURBINE ROTATES 360°
AROUND THE CENTRE OF THE MAST
- TRACKING THE WIND DIRECTION \

YAW DIAMETER
THE TURBINE ROTATES 360°
AROUND THE CENTRE OF THE MAST
- TRACKING THE WIND DIRECTION \

Ø2620.0 REF.

3037.0 REF.

1143.0 REF.

ROTOR BLADES
SWEPT AREA = 3.46m sq
SWEPT DIAMETER = 2.1m


1. NACELLE BODY, GENERATOR AND BOOMS ARE FINISHED TO RAL: 9016 (TRAFFIC WHITE)
2. FINS AND ROTOR ARE FINISHED TO MATT BLACK.
3. BUILDING/ WALL SHOWN IN VIEWS IS FOR VISUALISATION ONLY.
4. ALL LOADS ARE INDICATIVE ONLY AND WILL BE SITE AND INSTALLATION SPECIFIC. IT IS RECOMMENDED THAT STRUCTURAL ADVICE IS SOUGHT PRIOR TO INSTALLATION

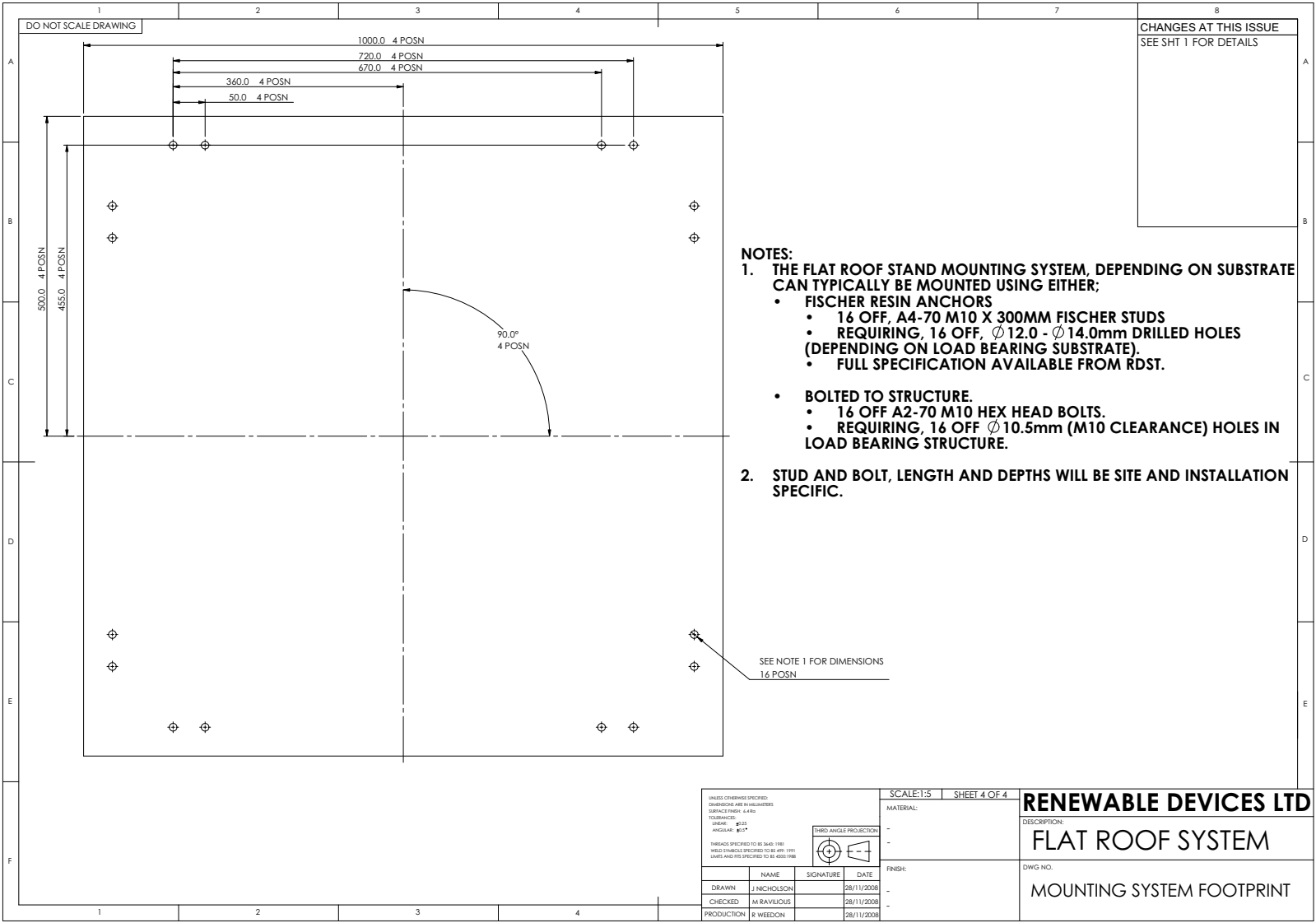
CHANGES AT THIS ISSUE
SEE SHT 1 FOR DETAILS

CHANGES AT THIS ISSUE
SEE SHT 1 FOR DETAILS

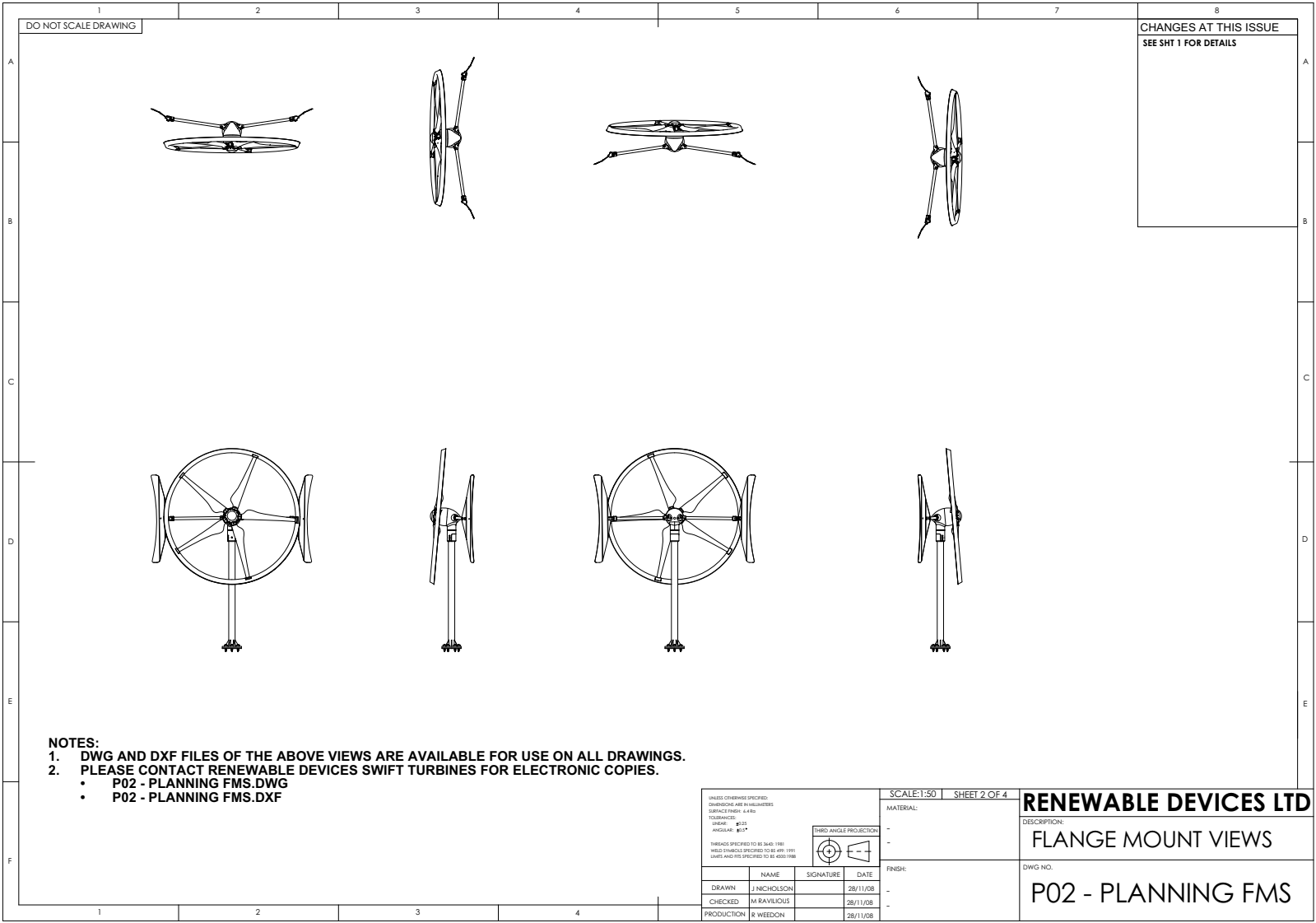
7.0kN

1.25kN

UNLESS OTHERWISE SPECIFIED: DIMENSIONS ARE IN MILLIMETERS SURFACE FINISH - A 40 TOLERANCES LINEAR: ± 0.13 ANGULAR: $\pm 0.5^\circ$			SCALE: 1:30		SHEET 3 OF 4		RENEWABLE DEVICES LTD													
THREADS SPECIFIED TO BE BS48: 1993 HEX NUTS SPECIFIED TO BE 405: 1991 WASHERS AND RIVS SPECIFIED TO BE 4050: 1988			MATERIAL:		THIRD ANGLE PROJECTION		DESCRIPTION: TURBINE LOADINGS TO BS61400-2													
																				
			FINISH:				DWG NO. P02 - PLANNING FRMS													
<table><tr><td>NAME</td><td>SIGNATURE</td><td>DATE</td></tr><tr><td>DRAWN J. NICHOLSON</td><td></td><td>28/11/2008</td></tr><tr><td>CHECKED M. RAVILOUS</td><td></td><td>28/11/2008</td></tr><tr><td>PRODUCTION R. WOODON</td><td></td><td>28/11/2008</td></tr></table>			NAME	SIGNATURE	DATE	DRAWN J. NICHOLSON		28/11/2008	CHECKED M. RAVILOUS		28/11/2008	PRODUCTION R. WOODON		28/11/2008						
NAME	SIGNATURE	DATE																		
DRAWN J. NICHOLSON		28/11/2008																		
CHECKED M. RAVILOUS		28/11/2008																		
PRODUCTION R. WOODON		28/11/2008																		



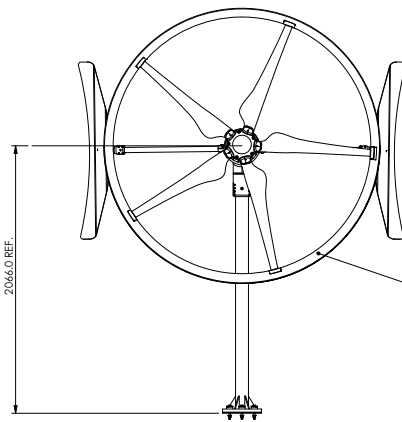
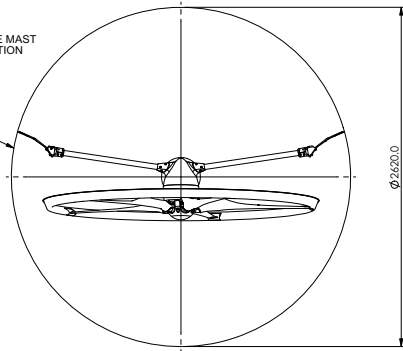




- NOTES:
1. DWG AND DXF FILES OF THE ABOVE VIEWS ARE AVAILABLE FOR USE ON ALL DRAWINGS.
 2. PLEASE CONTACT RENEWABLE DEVICES SWIFT TURBINES FOR ELECTRONIC COPIES.
 - P02 - PLANNING FMS.DWG
 - P02 - PLANNING FMS.DXF

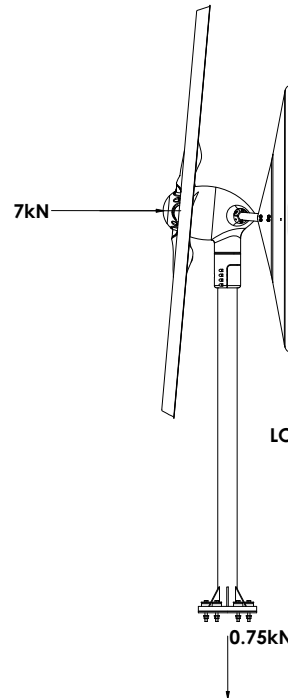
UNLESS OTHERWISE SPECIFIED: DIMENSIONS ARE IN MILLIMETERS SURFACE FINISH: A4.80 TOLERANCES: HOLE: ± 0.10 ANGULAR: $\pm 0.5^\circ$				SCALE: 1:50 SHEET 2 OF 4		RENEWABLE DEVICES LTD
THIRD ANGLE PROJECTION				MATERIAL:		
FINISH:				-		FLANGE MOUNT VIEWS
DWG NO.				-		P02 - PLANNING FMS
DRAWN: J NICHOLSON				28/11/08		
CHECKED: M RAVILIOUS				28/11/08		
PRODUCTION: R WOODON				28/11/08		

YAW DIAMETER
THE TURBINE ROTATES 360°
AROUND THE CENTRE OF THE MAST
- TRACKING THE WIND DIRECTION




ROTOR BLADES
SWEPT AREA = 3.46m sq
SWEPT DIAMETER = 2.1m

1. NACELLE BODY GENERATOR AND BOOMS ARE FINISHED TO RAL: 9016 (TRAFFIC WHITE)
2. FINS AND ROTOR ARE FINISHED TO MATT BLACK.
3. BUILDING/ WALL SHOWN IN VIEWS IS FOR VISUALISATION ONLY.
4. ALL LOADS ARE INDICATIVE ONLY AND WILL BE SITE AND INSTALLATION SPECIFIC. IT IS RECOMMENDED THAT STRUCTURAL ADVICE IS SOUGHT PRIOR TO INSTALLATION



LOADINGS VIEW
SCALE: 1:20

UNLESS OTHERWISE SPECIFIED: DIMENSIONS ARE IN MILLIMETERS SURFACE FINISH: 4.00 TOLERANCES: LINEAR: ± 0.15 ANGULAR: $\pm 1^\circ$				SCALE: 1:30		SHEET 3 OF 4		RENEWABLE DEVICES LTD	
THREADS SPECIFIED TO BS 3445: 1981 WELD THREADS SPECIFIED TO BS 4543: 1991 GASKETS ARE SPECIFIED TO BS 4543: 1988				MATERIAL:		DESCRIPTION: TURBINE LOADINGS TO BS61400			
<div>THIRD ANGLE PROJECTION</div> <div></div>				FINISH:		DWG NO.		P02 - PLANNING FMS	
NAME		SIGNATURE		DATE					
DRAWN J NICHOLSON				28/11/08					
CHECKED									
PRODUCTION									

